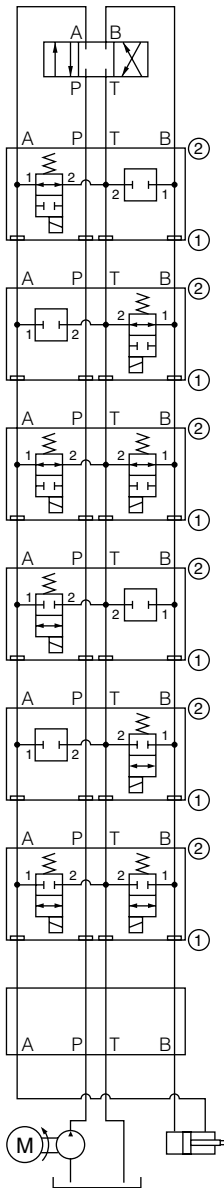
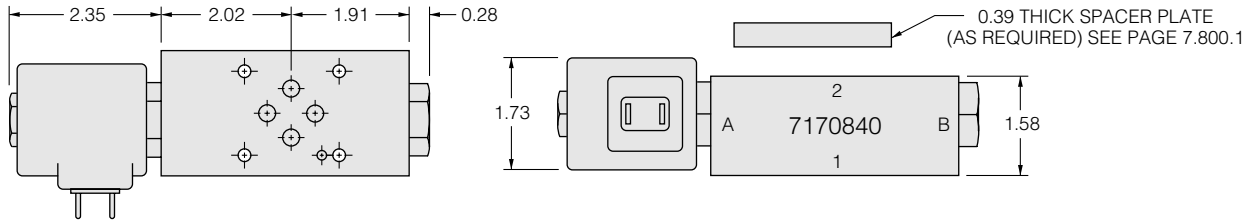


Solenoid Sandwich Valves



Solenoid, Unload A to T, Normally Open

Side Up: 2 Plug: CP10-20-x
Block No.: 7170840 Plug Side: B

Model No. SV10-25-S03U-x-xx

Seal Plate: No Catalog Ref.: 1.076.1
Max. Flow: 6 gpm

Solenoid, Unload B to T, Normally Open

Side Up: 2 Plug: CP10-20-x
Block No.: 7170840 Plug Side: A

Model No. SV10-25-S03V-x-xx

Seal Plate: No Catalog Ref.: 1.076.1
Max. Flow: 6 gpm

Solenoid, Unload A & B to T, Normally Open

Side Up: 2 Plug: None
Block No.: 7170840 Plug Side: n/a

Model No. SV10-25-S03W-x-xx

Seal Plate: No Catalog Ref.: 1.076.1
Max. Flow: 6 gpm

Solenoid, Unload A to T, Normally Closed

Side Up: 2 Plug: CP10-20-x
Block No.: 7170840 Plug Side: B

Model No. SV10-24-S03U-x-xx

Seal Plate: No Catalog Ref.: 1.064.1

Solenoid, Unload B to T, Normally Closed

Side Up: 2 Plug: CP10-20-x
Block No.: 7170840 Plug Side: A

Model No. SV10-24-S03V-x-xx

Seal Plate: No Catalog Ref.: 1.064.1

Solenoid, Unload A & B to T, Normally Open

Side Up: 2 Plug: None
Block No.: 7170840 Plug Side: n/a

Model No. SV10-24-S03W-x-xx

Seal Plate: No Catalog Ref.: 1.064.1

ISO/CETOP 3 Manifold